

# Harmes Turner Brown

**Bridge Street, Walton-On-Thames, KT12 1AB**



**£160,000 Leasehold**

We are delighted to offer this highly regarded apartment for over 55's and located in the centre of Walton surrounded by the High Street shops and restaurants and with the picturesque river Thames nearby. This second floor apartment is serviced by a lift and also has the benefit of a residents lounge, residents laundry room and concierge. The accommodation briefly includes an entrance hallway with storage, bright and airy lounge room with feature fireplace and archway to the fitted kitchen. The bedroom includes a good range of built in wardrobes. The shower room includes a large walk in shower, wash hand basin and low level WC. Externally the beautifully kept communal gardens make for the perfect space to relax and enjoy the sunshine with a paved patio and various seating areas all surrounded by mature trees and shrubs. There is secure residents parking underground with electric gates and easy access into the building by foot. Manor Place is built to a high specification with a scheme manager service and guest bedroom available for visiting family/friends. There is also secure underground parking on a first come first served basis.

INDEPENDENT ESTATE AGENTS

[www.htbproperty.com](http://www.htbproperty.com)

SALES • LETTINGS • MANAGEMENT

Walton Branch  
45A High Street  
Walton on Thames  
Surrey KT12 1DH  
01932 222266

[sales@htbproperty.com](mailto:sales@htbproperty.com)  
[lettings@htbproperty.com](mailto:lettings@htbproperty.com)



Registered address: 2 AC Court, Hight Street, Thames Ditton KT7 0SR Registered in England, Number 6433673

Molesey Branch  
45 Walton Road  
East Molesey  
Surrey KT8 0DP  
0208 001 8385

INDEPENDENT ESTATE AGENTS

[www.htbproperty.com](http://www.htbproperty.com)

SALES • LETTINGS • MANAGEMENT

Walton Branch  
45A High Street  
Walton on Thames  
Surrey KT12 1DH  
01932 222266

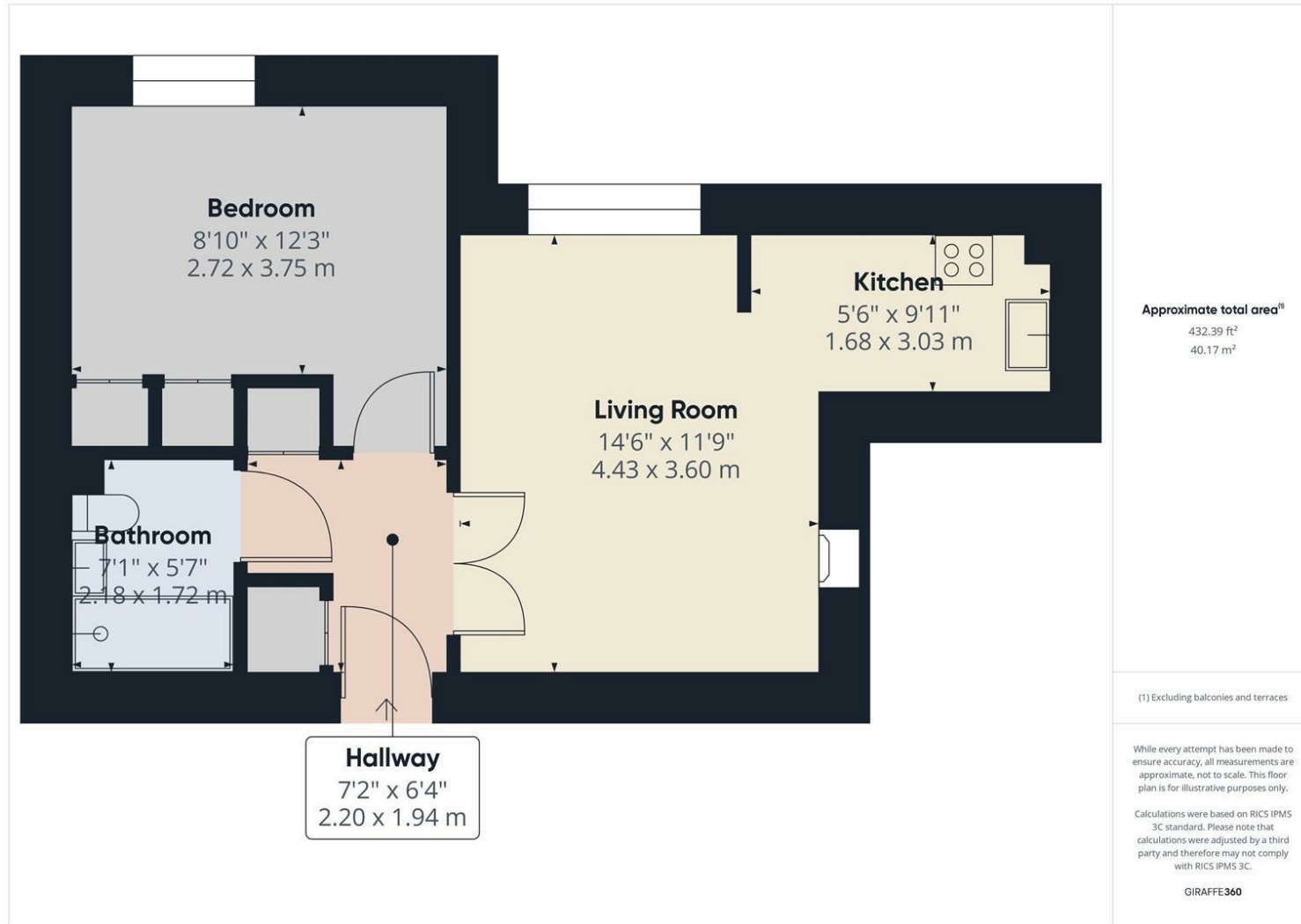
[sales@htbproperty.com](mailto:sales@htbproperty.com)  
[lettings@htbproperty.com](mailto:lettings@htbproperty.com)



Registered address: 2 AC Court, Hight Street, Thames Ditton KT7 0SR Registered in England, Number 6433673

Molesey Branch  
45 Walton Road  
East Molesey  
Surrey KT8 0DP  
0208 001 8385

# Bridge Street, Walton-On-Thames, KT12 1AB



- NO ONWARD CHAIN
- CONCIERGE SERVICE
- FITTED KITCHEN
- RESIDENTS LOUNGE
- EXCEPTIONAL VALUE

- SECOND FLOOR WITH LIFT SERVICE
- TOWN CENTRE LOCATION
- MODERN SHOWER ROOM
- RESIDENTS LAUNDRY ROOM
- SECURE RESIDENTS PARKING